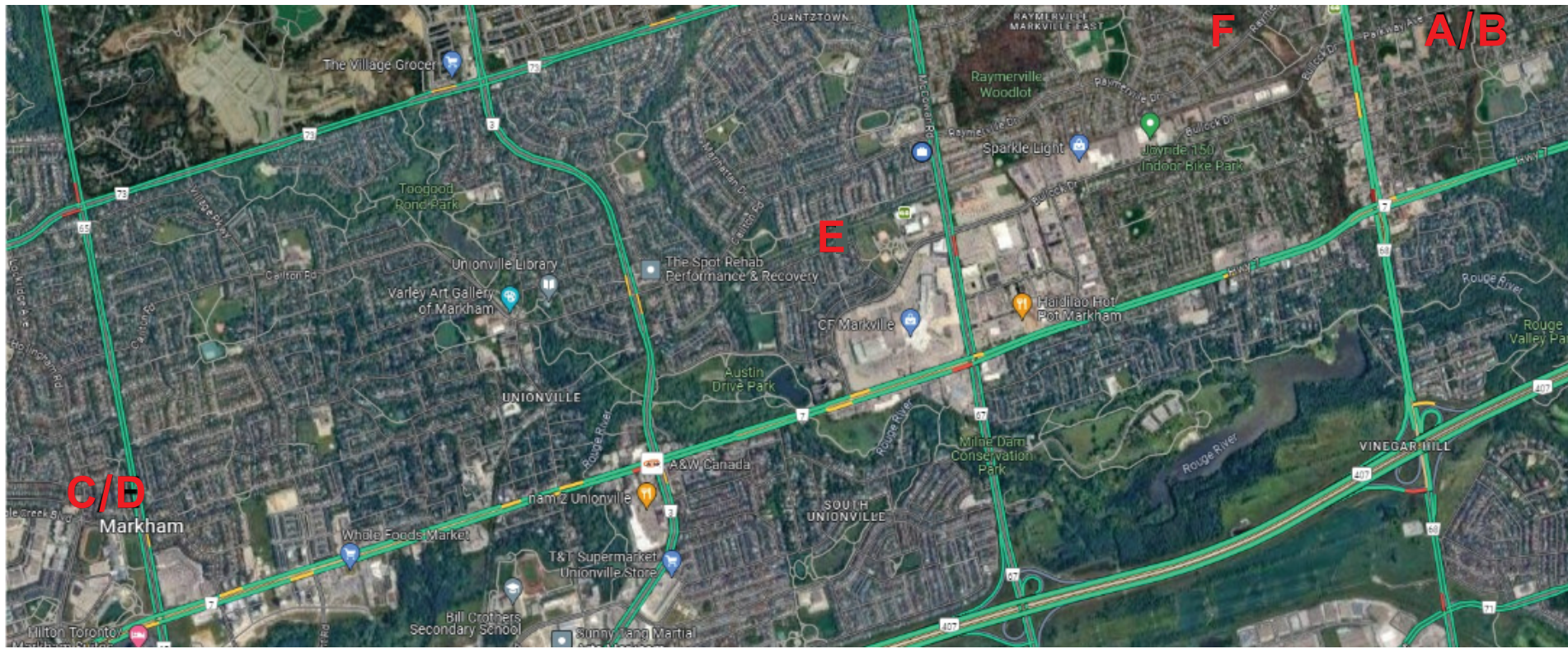


2025 STEVE MORRELL INVITATIONAL FIELD MAP AND DIRECTIONS



FILED A - MARKHAM DISTRICT HIGH SCHOOL – GPS 89 Church St, Markham, field with endzone next to parking lot

Directions – Wooten Way runs north south of Highway 7 between Markham Road and ninth line. Take Wooten Way north from Highway 7 to Church Street. Turn left (west) on Church Street and School will be on your left.

FILED B - MARKHAM DISTRICT HIGH SCHOOL – GPS 89 Church St, Markham, field with endzone next to FIELD A

FIELD C - UNIONVILLE HIGH SCHOOL WEST (UPPER FIELD - BACK OF SCHOOL) GPS - 201 Town Centre Blvd Markham ON L3R 8G5

Directions - Take Warden Avenue North to Highway 7 - Go West (left) on Highway 7, to Towne Center Blvd (first right) - Turn right on Towne Centre Blvd - School parking is 2nd driveway on right

FIELD D- UNIONVILLE HIGH SCHOOL EAST (LOWER FIELD - FRONT OF SCHOOL) - Same as above

FIELD E – CENTENNIAL PARK – GPS 49 Markville Road to field. For parking GPS - 8600 McCowan Rd. **Directions**-Take McCowan Rd North past Highway 7 to 2nd set of lights (Bullock Drive) - Left (West) on Bullock Drive to first driveway on right (Centennial Arena) - Park vehicle in arena west end parking lot and walk to the North West corner of arena property (vehicles parked on Markville Road may be ticketed)

FIELD F - SPRINGDALE PARK

GPS - 45 Norwich Dr, Markham, ON L3P 6R4

Directions - Take exit Markham Road (Main Street Markham) north from Highway #7

Turn left onto Bullock Dr

Turn immediately right onto Snider Drive

Turn left onto Raymerville Drive

Turn right onto Norwich Drive and follow to the end